

modernistic

Shipping & Installation

We make it as painless as possible by solving the problems and streamlining the process to reduce your cost, time, and energy.



modprint.com

Product Applications & Highlights

Our close partnerships with raw material suppliers, nationwide network of installers, and extreme production knowledge and expertise ensure both a singular level supply chain and your peace of mind. We give you more time, while we take on the responsibility of a perfect execution of your project.

Highlights

Single Point Supply Chain

Gain ease while eliminating need for multiple vendors

Match Component System

Warranties, benefits that only that we can offer

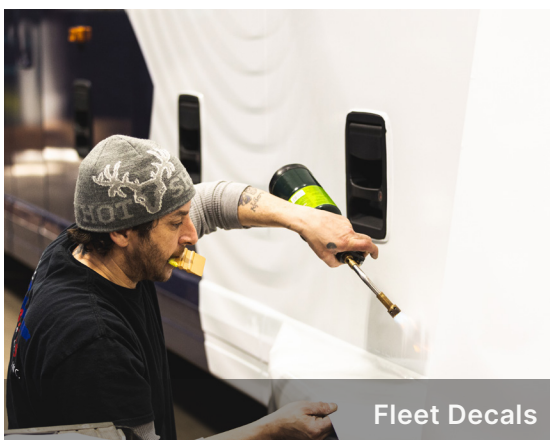
Complete Product Control

We give the most options to hit budget, vision, needs

Applications



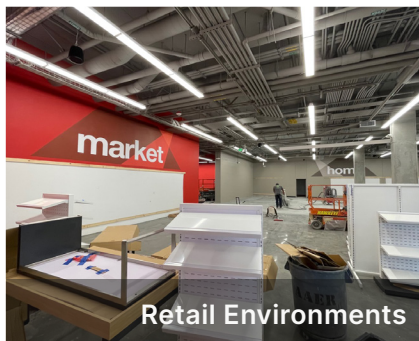
Semi-Trucks



Fleet Decals

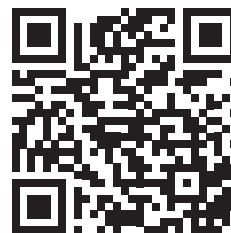


Wall Graphics



Retail Environments

Scan For A Case Study:



Scan For More Examples:



Did You Know?

We are able to reduce shipping costs and time by producing a central US location, designing parts to ship efficiently, and building precise kits to eliminate carbon footprint and wasted space.

Contact

+1 651 291 7650
info@modprint.com